

CD of Mars Event.

Mars. 12/Aug 2003. Image. Peter Bruce.



Tues 5/8/03. LX200. 10" f30. Planetcam. Peter Bruce. Croydon. UK.

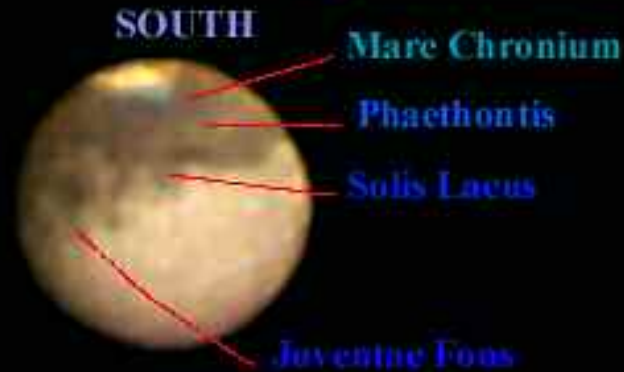


IMAGE BY PETER BRUCE.



Peter Bruce.
18 Aug 23:47 pm. LX200 10" f30. Special Barlow.
Mars Image Magnitude 2.77
Diam 0.9926
Dia Arcsec 24.7600



Mars. 19th August 2003.
LX200. 10" f30

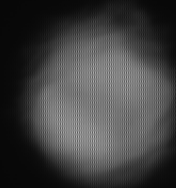


MARS.
Best image so far. LX200. 10" f30 f50.
Processed by digital mask.
19th August 2003.
Diam 0.9906. Magnitude 2.7800. Dia Arcsec 24.5700.
South at top east at right.

MARS.

SEQUENCE OF IMAGES FROM 5TH TO 19TH AUGUST 2003.

OPPOSITION 27TH AUGUST 2003.



M A R S.

**THE 3 COLOUR IMAGES
WERE TAKEN FROM 20TH
TO THE 4TH SEPTEMBER
2003.**

**THE IMAGE ABOVE
CLEARLY SHOWS HOW
HARD THIS OBJECT IS TO
FOCUS AND CAPTURE.**

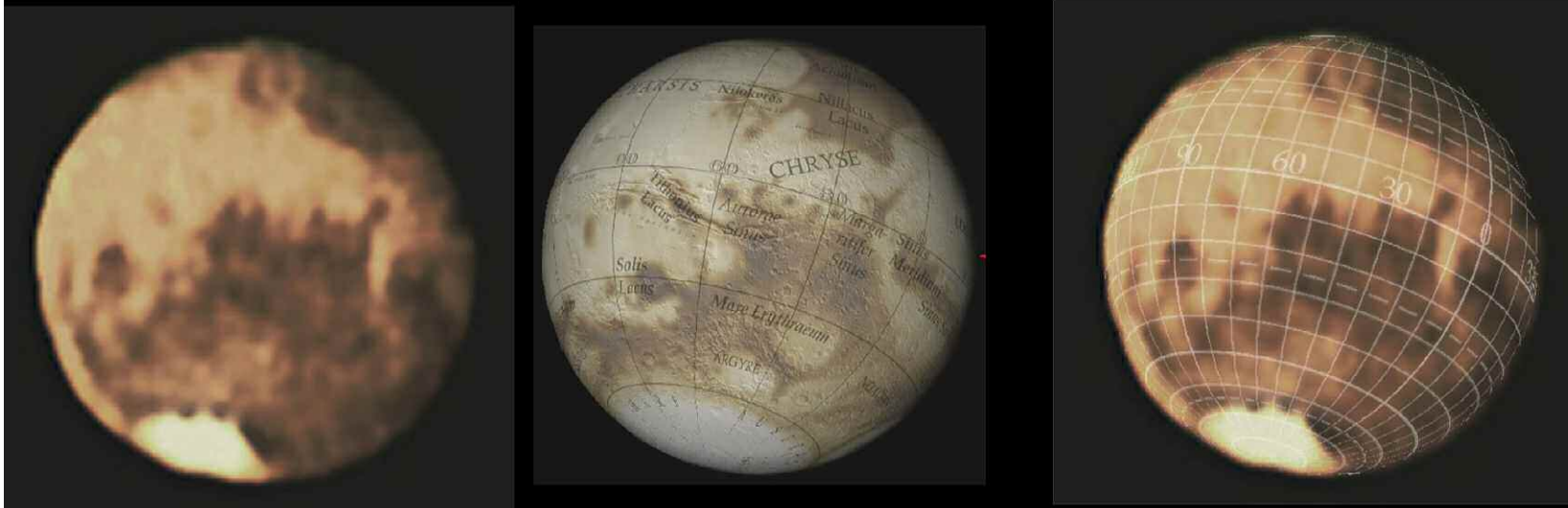
MARS – THE BEST IMAGE



This image is now in the final best 15 sent into the Sky at Night. I am pleased with that alone. Final results on 4th January 2004.....

Peter Bruce. West Croydon. Surrey.

MARS – South at bottom. Original image left compared to fly by space craft image of same scale.

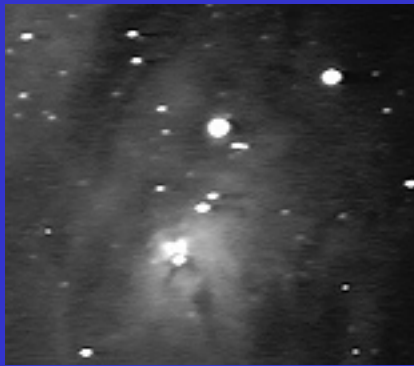


The difference in some features is due to the micro-fine Martian dust which is blown by the wind and covers / or exposes surface features. This changes the Martian features reflectivity.

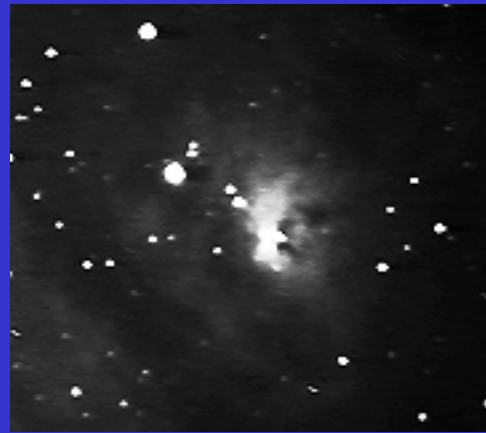
Since the NASSA fly-by space craft took the centre image things have changed.

The South polar ice cap is shrinking fast as the Martian summer takes hold and at this opposition of Mars no major dust storms took place. The 2001 opposition had a dust storm that obscured all of the planets surface feature – nothing at all could be seen over the whole planet.....

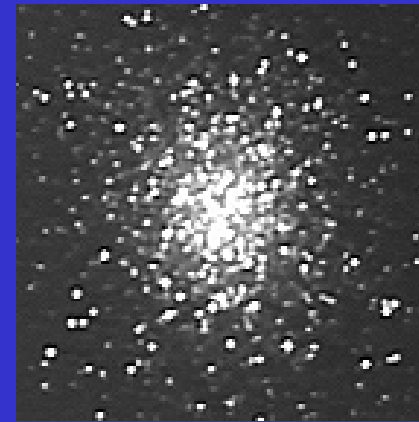
DEEP SPACE IMAGES – VERY SPECIAL VIDEO CAMERA – STACKS IMAGES.



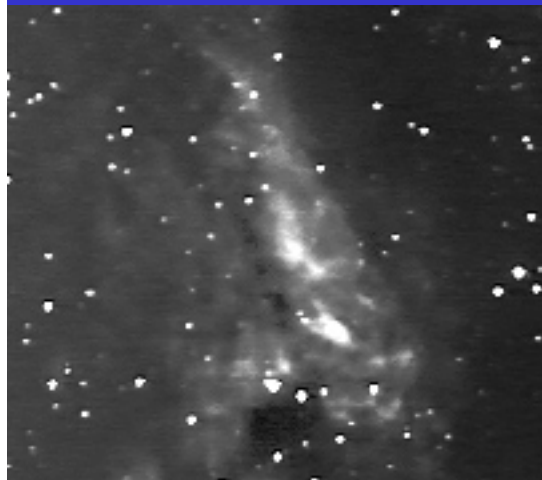
LAGOON NEBULA



TRIFFID NEBULA



HERCULES CLUSTER



SWAN NEBULA

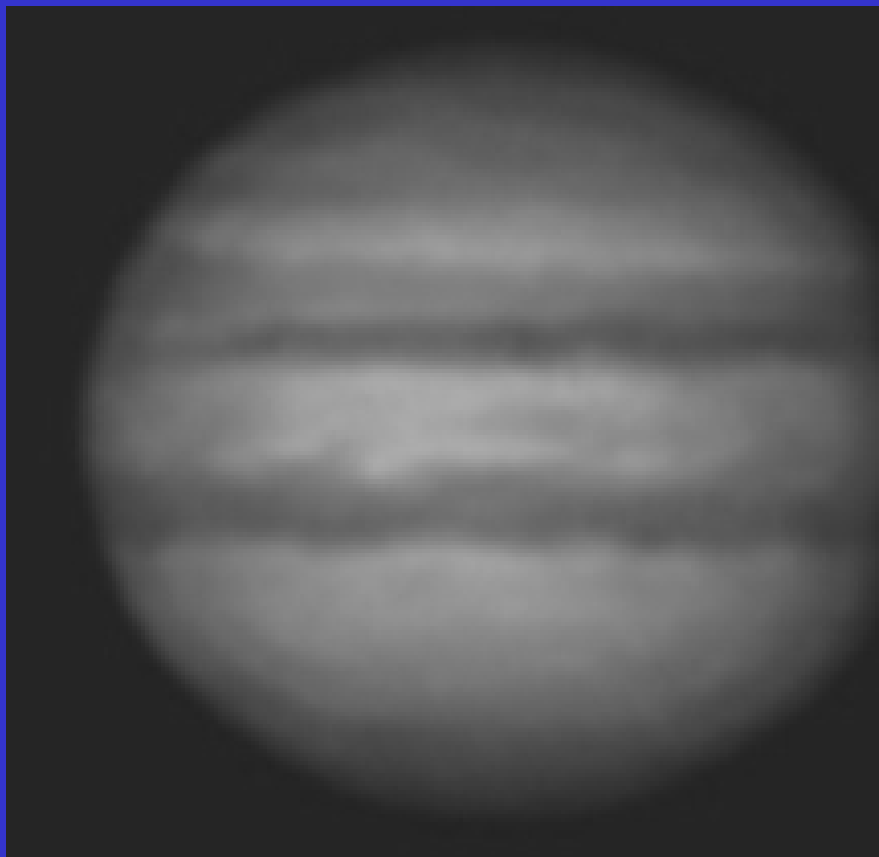


RING NEBULA.



VIDEO

PLANETS — SPECIAL VIDEO CAMERA. — STACKED FRAMES.



JUPITER



SATURN 26/2/03
STELLACAM EX
PETER BRUCE.

VIDEO

OK

**So how easy is it to
set up and use.**